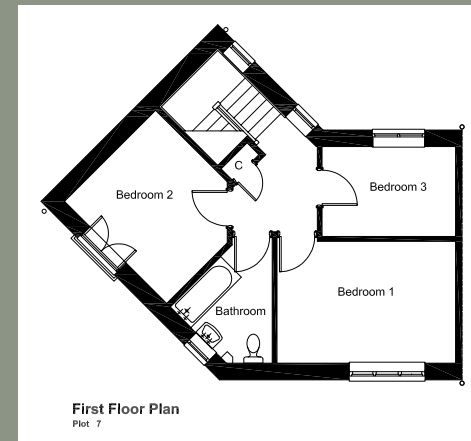
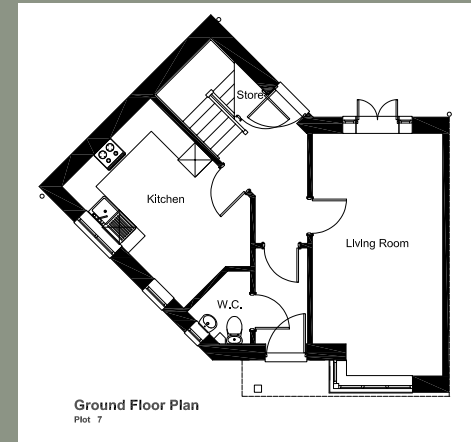


Gower

3 bedroom corner house

Plots 7, 8 and 19



Ground Floor

Living Room	3.19m x 5.95m
Kitchen	3.07m x 4.22m
WC	1.11m x 1.40m

First Floor

Bedroom 1	4.25m x 2.90m
Bedroom 2	3.44m x 3.06m
Bedroom 3	2.14m x 3.17m
Bathroom	3.01m(2.08m) x 1.89m

All applications for shared ownership properties are subject to meeting the Homebuy eligibility criteria, details of which are available upon request.

All images are for illustrative purposes only and do not form part of the contract for sale. Room dimensions are indicative and should not be used for the purposes of buying furniture or carpets