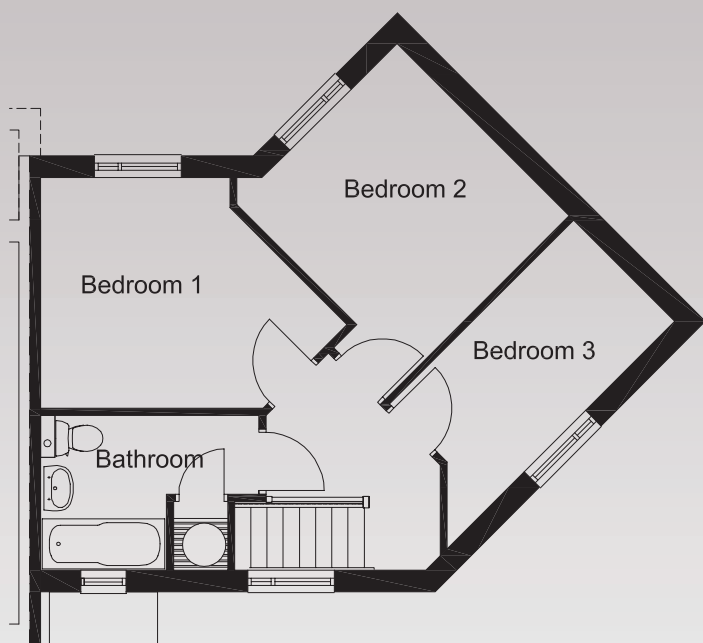
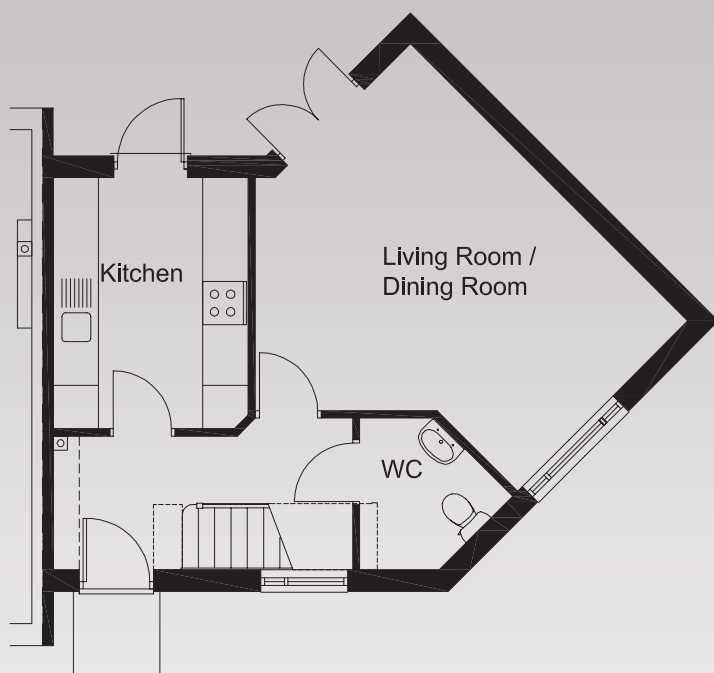


# The Ash

# Lymebrook Way



## GROUND FLOOR

|                         |               |
|-------------------------|---------------|
| Living room/Dining room | 5.12m x 5.44m |
| Kitchen                 | 2.70m x 3.48m |
| WC                      | 2.12m x 2.11m |

## FIRST FLOOR

|           |               |
|-----------|---------------|
| Bedroom 1 | 4.25m x 3.20m |
| Bedroom 2 | 3.61m x 3.64m |
| Bedroom 3 | 1.99m x 4.47m |
| Bathroom  | 3.03m x 2.15m |

## 3 bedroom corner house - Plots 4, 6

All images are for illustrative purposes only and do not form part of the contract for sale. Room dimensions are indicative and should not be used for the purposes of buying furniture or carpets.