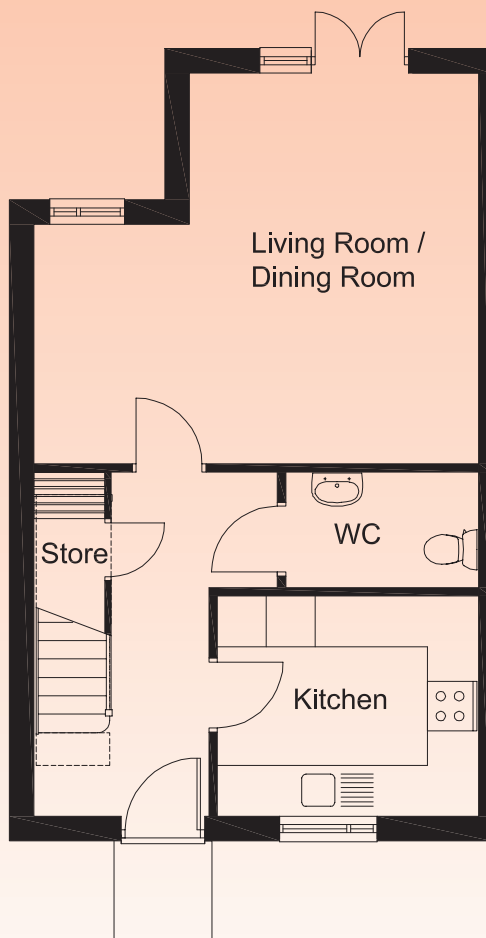


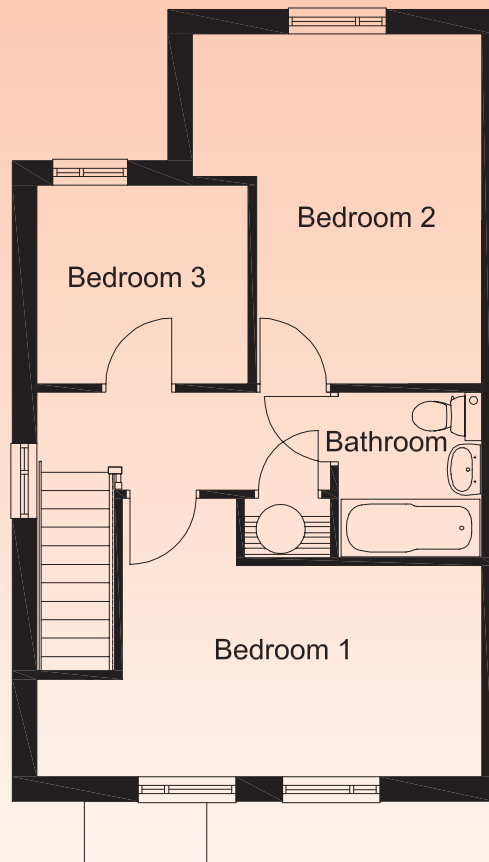
# The Hawthorn

# Lymebrook Way



## GROUND FLOOR

Living room/Dining room	5.45m x 4.79m
Kitchen	3.21m x 2.70m
WC	2.37m x 1.42m



## FIRST FLOOR

Bedroom 1	5.45m x 3.41m
Bedroom 2	3.55m x 4.29m
Bedroom 3	2.59m x 2.44m
Bathroom	1.76m x 2.03m

3 bedroom house - Plots 14, 15, 52, 57, 73, 74

All images are for illustrative purposes only and do not form part of the contract for sale.  
Room dimensions are indicative and should not be used for the purposes of buying furniture or carpets.