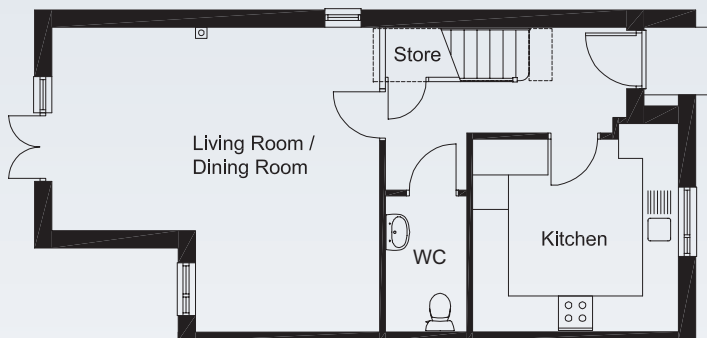


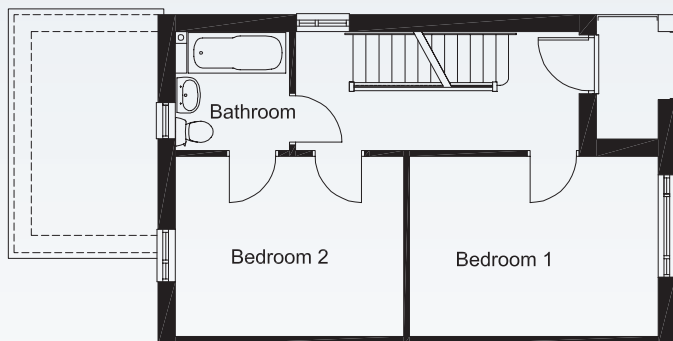
The Oak

Lymebrook Way



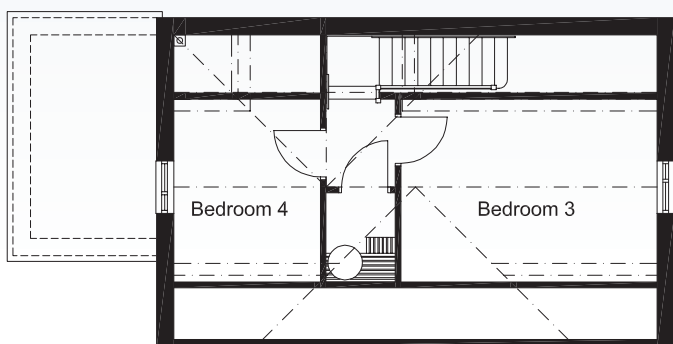
GROUND FLOOR

Living room/Dining room	5.31m x 5.71m
Kitchen	3.36m x 3.58m
WC	2.37m x 1.42m



FIRST FLOOR

Bedroom 1	3.14m x 4.33m
Bedroom 2	3.14m x 3.98m
Bathroom	2.07m x 1.99m



SECOND FLOOR

Bedroom 3	3.18m x 4.46m
Bedroom 4	3.18m x 2.55m

4 bedroom corner house - Plots 16, 80

All images are for illustrative purposes only and do not form part of the contract for sale. Room dimensions are indicative and should not be used for the purposes of buying furniture or carpets.